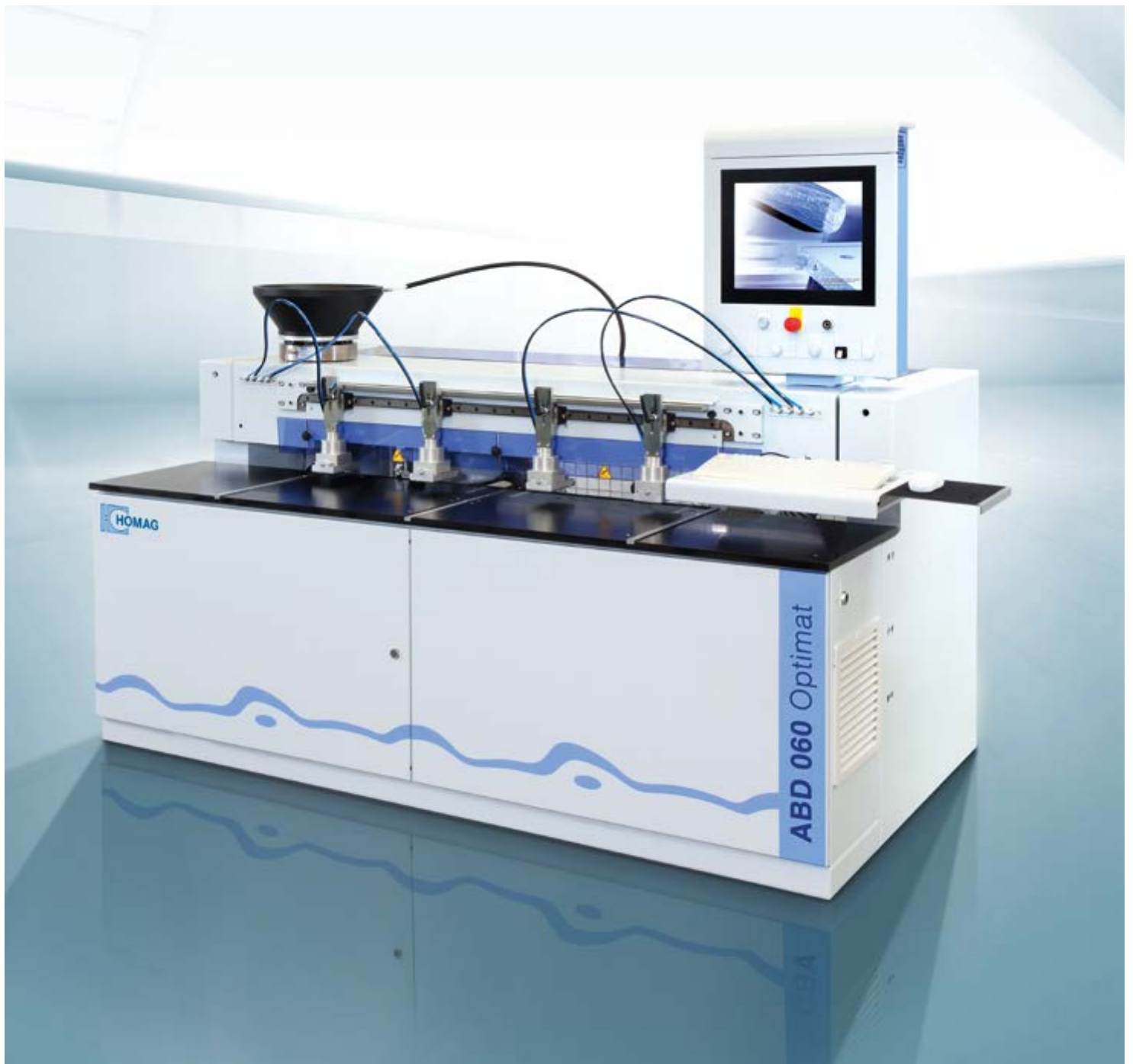


ABD 050/060 Optimat CNC-Drilling and Dowel Inserting Machine







Horizontal drilling and dowelling in a single machine

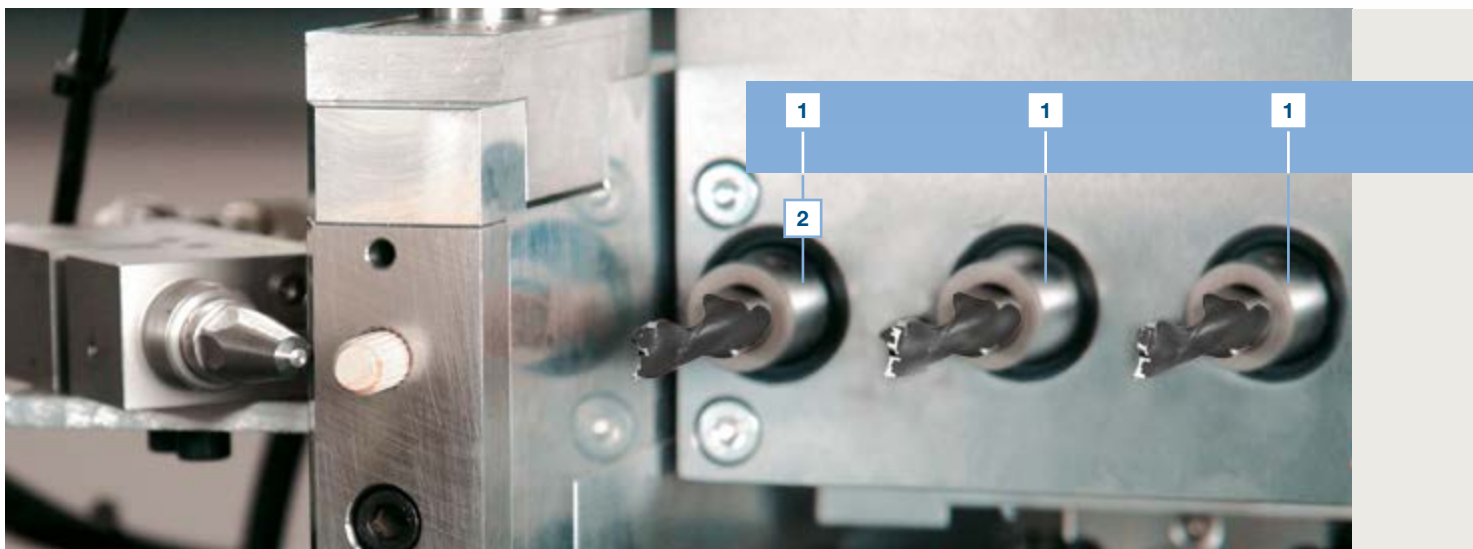
The Result: **YOUR SOLUTION**

Whether as individual machine or as complementary product in connection with a CNC processing center – the ABD has got exactly two tasks: drilling and dowelling – making the machine more efficient than ever before.

Here you will find more: www.homag.com

Contents

- 04 ABD 050/060 Optimat | Highlights
- 06 Horizontal drilling and dowelling
- 08 Software
- 09 Option – Office-Package
- 10 Technical Data



Maximum workpiece dimension

- ABD 050/12: 1250 mm
- ABD 050/28: 2800 mm
- ABD 060/12: 1250 mm
- ABD 060/28: 2800 mm

ABD 050/060

INCREDIBLY FAST...

High-speed drilling and dowel insertion aggregate for accurate drill holes and precise positioning of dowels

KEEPING A TIGHT GRIP...

By using up to 8 clamping cylinders, adjustable to length and thickness, any workpiece is held firmly

BENEFICIAL...

The lowerable center stop allows for flexible handling of workpieces thereby ensuring an optimum two-field operation

PROVIDES SILENCE...

Heavy and sturdy machine bed made of SORB TECH for vibration-free operation (up to 2.2 t)

ESTABLISHED ALL OVER THE WORLD...

The powerful HOMAG Group software woodWOP is already included as a standard

EFFICIENT...

The quiet running low-pressure glue pump in a compact design

CONFIGURATION

1 ABD 060
(3 spindles individually selectable)

2 ABD 050
(1 spindle individually selectable)

Pict. left:
High-speed dowelling and drilling unit
For precise processing while drilling and dowelling horizontally



ABD 060
CNC-controlled:
X, Y and Z axes

1



ABD 050
CNC-controlled: X axes
Manually adjustable: Y / Z axes

2

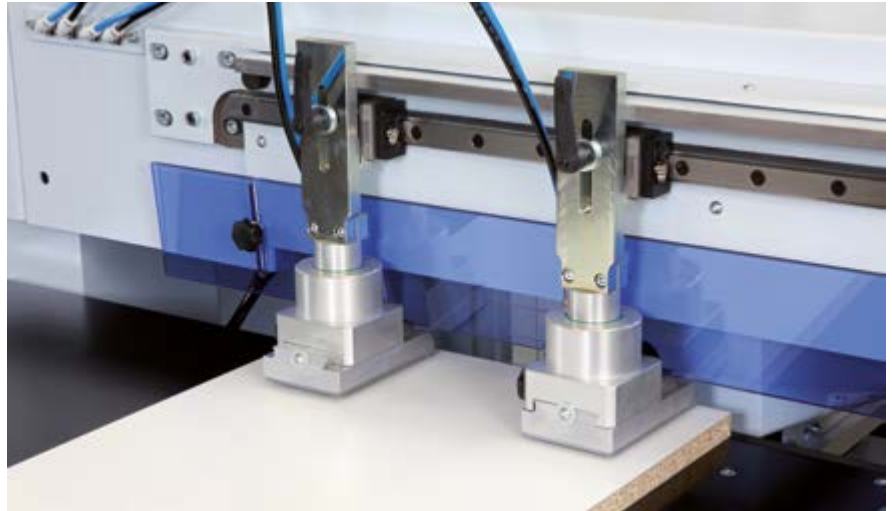


Horizontal drilling and dowelling

WITH THE ABD 050/060 YOU ARE PROVIDED WITH TOP-QUALITY EQUIPMENT FROM THE VERY BEGINNING. Excellent processing quality is guaranteed in the long term by including fundamental technology already in the standard

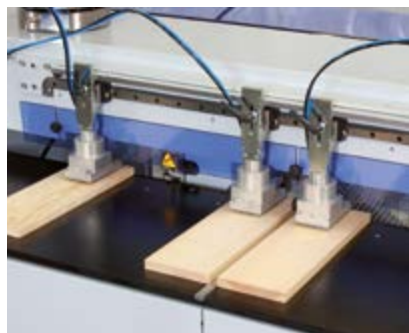
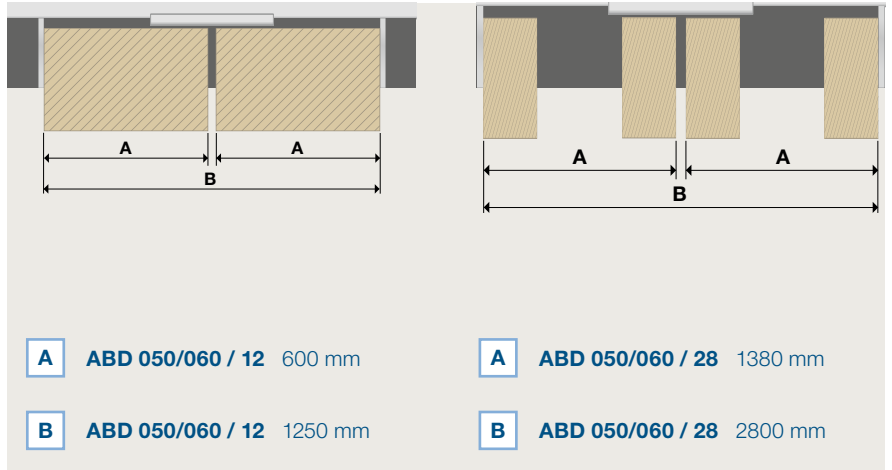
Clamping cylinder

- Manually length and thickness adjustable
- 4 Clamping cylinders ABD 050/060/12,
8 Clamping cylinders ABD 050/060/28



Alternating operation

- Depending on the workpiece dimensions the ABD Optimats can be fed with up to 4 workpieces.



Central stop and lateral stop

- Pneumatically lowerabler



Low-pressure glue pump 1:1

- Double membrane pump 1:1, low-noise level, compact and with low energy consumption



Vibrating conveyor

- For automatic dowel infeed of standard dowels of 8 x 30 mm or 8 x 35 mm

Software

WITH THIS SOFTWARE PACKAGE YOU ARE »READY TO RACE«. You will receive one of the most established CNC-programming systems, the woodWOP software, which has proven itself by more than 30.000 installations worldwide.

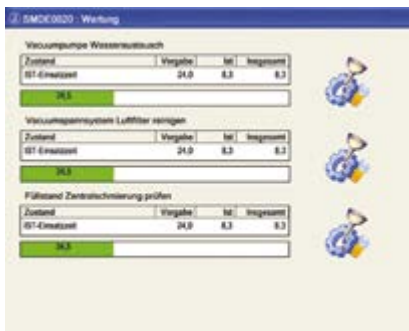
**Please use our website:
Worldwide largest forum for woodWOP:**

**Free Download of woodWOP-components:
www.homag.com/Produkte/Software**



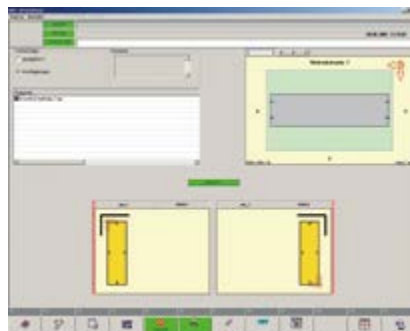
powerControl

- 17" TFT monitor
- Provision of teleservice capability
- USB frontside bus
- Ethernet connection 10/100 Mbit



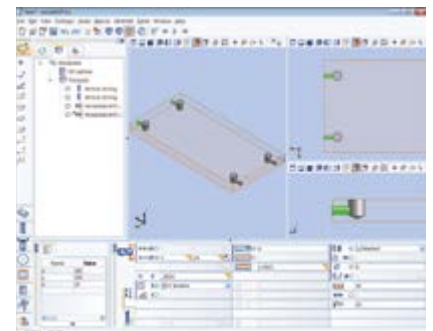
Machine Data Recording

- Collecting and evaluating machine states via time meter and event meter



ABD Work

- Modern and simple control of main machine functions through soft keys
- Graphical loading

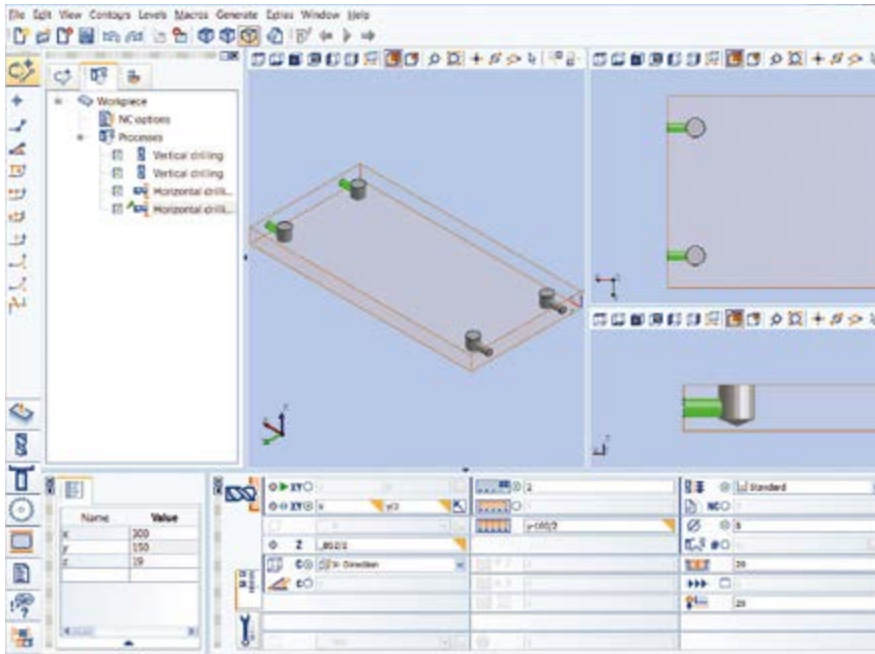


woodWOP | License „Machine“

- Modern software based on Windows®
- More than 30,000 installations worldwide

Option – Office-Package

CONTENT: woodWOP License „Process Planning Workplace“ | woodWOP DXF Basic | Bar code link | woodAssembler



woodWOP | License „Process Planning Workplace“

- Modern software based on Windows®
- More than 30,000 installations worldwide



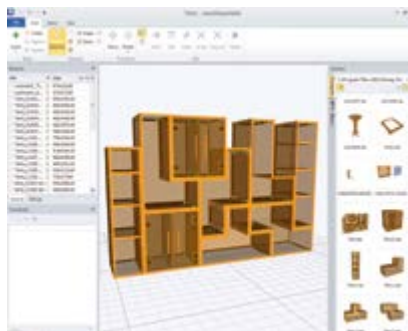
woodWOP DXF Basic

- Interface for CAD-Data Import
- Basis to generate woodWOP programs



Bar code link (optional)

- Barcodescanner / -software
- Supported barcodes: 1D – Barode, 2D – Data Matrix Code
- Every workpiece is exactly identified for the further workpiece flow



woodAssembler

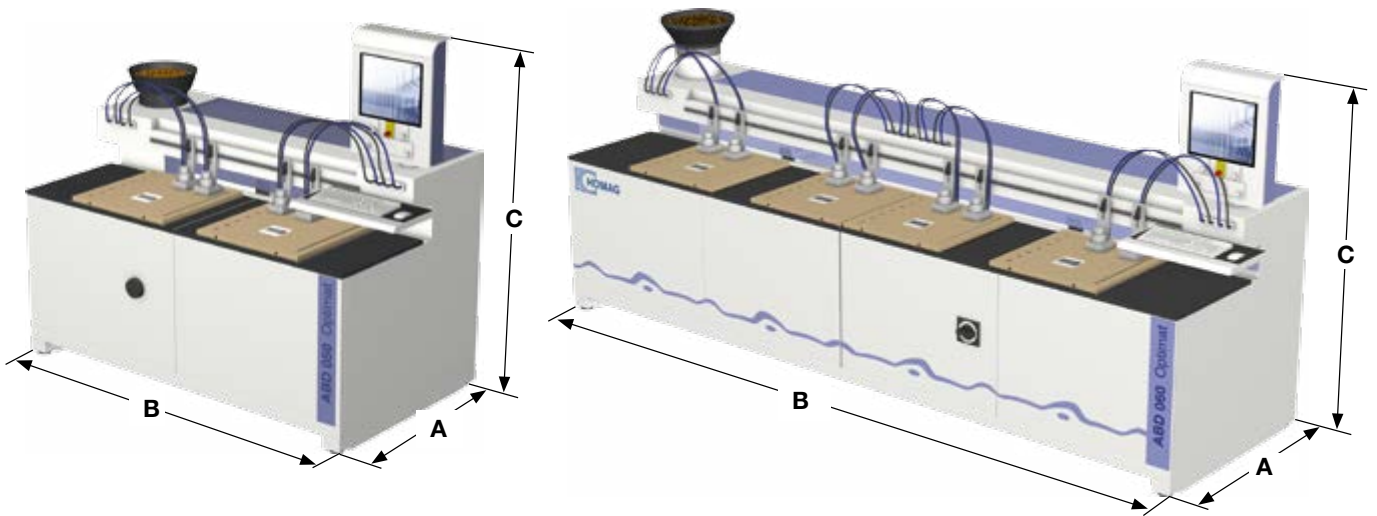
- To visualize woodWOP-programs (MPR) in 3D
- Enables the construction of individual workpieces to finished objects





Handling example

Technical data



TECHNICAL DATA HOMAG ABD 050/060

DIMENSIONS		ABD 050/12	ABD 050/28	ABD 060/12	ABD 060/28
A	mm / inch	1436 / 56.6	1436 / 56.6	1436 / 56.6	1436 / 56.6
B	mm / inch	2568 / 101.1	4118 / 162.1	2568 / 101.1	4118 / 162.1
C	mm / inch	2012 / 79.2	2012 / 79.2	2012 / 79.2	2012 / 79.2

WORKPIECE DIMENSIONS		ABD 050/12	ABD 050/28	ABD 060/12	ABD 060/28
Length	mm	20 – 1250	20 – 2800	20 – 1250	20 – 2800
Width	mm	20 – 800	20 – 800	20 – 800	20 – 800
Thickness	mm	10 – 60	10 – 60	10 – 60	10 – 60
Compressed air connection	inch	R 1/2"	R 1/2"	R 1/2"	R 1/2"
Compressed air supply	bar	min. 7	min. 7	min. 7	min. 7
Total connected voltage	kW	approx. 4.5	approx. 4.5	approx. 4.5	approx. 4.5
Extraction connection	mm	Ø 80	Ø 80	Ø 80	Ø 80
Extraction speed	m/sec.	30	30	30	30
Supply voltage	A	10	10	10	10
Total machine weight	kg	approx. 1100	approx. 2200	approx. 1100	approx. 2200

HOMAG Bohrsysteme GmbH

Benzstraße 10-16
33442 Herzebrock-Clarholz
GERMANY
Tel.: +49 5245 445-0
info-herzebrock@homag.com
www.homag.com



**Choose the Original
Choose Success!**

For the Success of Original
Technology. A VDMA Campaign