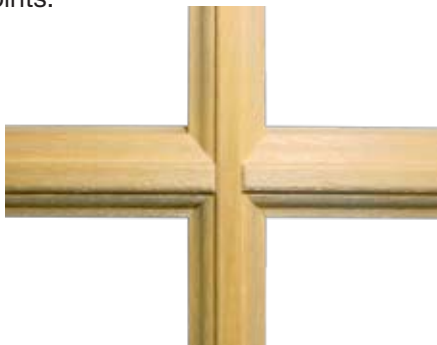


KSF-mini



Cross Joint Milling Machine STEGHERR type KSF-mini

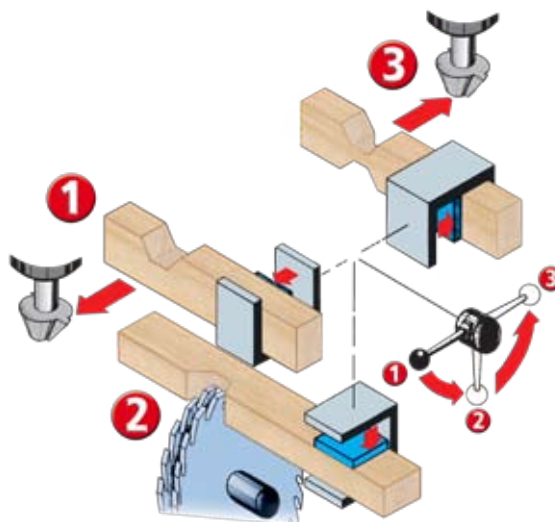
The KSF-mini is the ideal small cross bar milling machine for all usual cross joints.



Even already profiled bars* can be milled quickly and accurately with the KSF-mini.

The absolutely accurate precision of milling is achieved due to the machine's unique design by which all three cuts are done in one single clamping.

The Closed Halving Joint Cutter STEGHERR type KSF-mini is owing to its good value for money the ideal machine for companies that are not currently processing cross joints.



*depends on type of profile

For information, contact Stiles Enhancement Technologies
616.698.7500 | E-tech@stilesmachinery.com

INNOVATION

Stegherr

stiles e-tech
Enhancement Technologies