

Curvescan

3D Board Shape Scanner for lumber
recognizes twist, bow, cup and spring
after breakdown or kiln drying

Optiside

High-precision Cup Scanner for lumber
detects the cup and pith-side location
for planer and glulam mills



Curvescan

The Curvescan 3D Board Shape Scanner reliably recognizes distortion of lumber such as twist, bow, spring and cup in lineal or transverse transport direction.

Curvescan 3D Board Shape Scanner measures the geometry of lumber, even when moving during measurement, thanks to a sophisticated laser triangulation process. The measurement functions independently of transport direction and irregular movement, addressing a widespread issue in the global wood processing industry. Curvescan operates in high-speed production lines and returns consistent and reliable results.

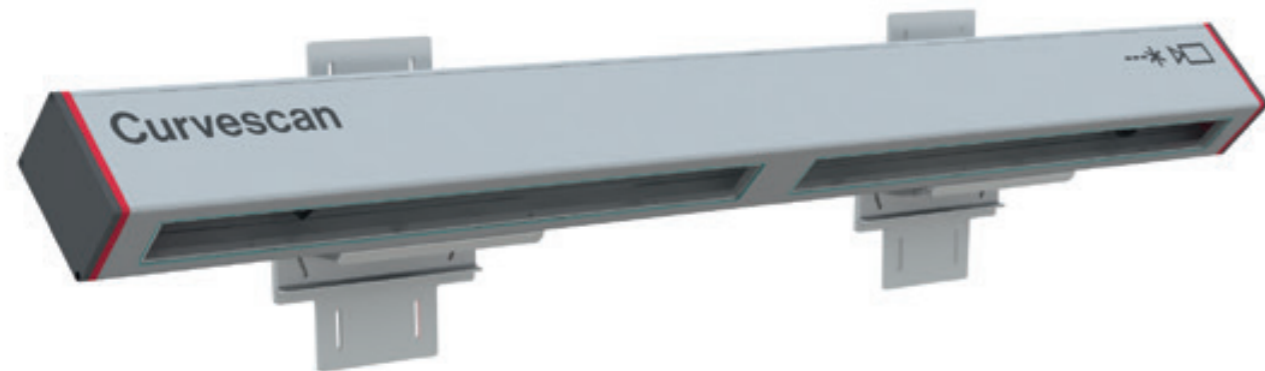
Curvescan 3D Board Shape Scanner can be further combined with Goldeneye Multi-Sensor Quality Scanner to increase the quality optimization for grading, chopping and sorting.

«Curvescan 3D Board Shape Scanner is ideal for grading and separating defective pieces of lumber from warp-free product, especially for planer and glulam mills after the dry kiln. Our optimization evaluates distortion based on your specific quality requirements and optimizes chopping or trimming so that distortion defects are greatly diminished.»

Dott. Ing. Federico Giudiceandrea
Microtec CEO

Curvescan recognizes

- × **twist**
- × **bow**
- × **cup**
- × **spring / crook**



Optiside

Optiside Cup Scanner detects the cup on the end of the lumber piece in order to correctly orientate the boards. The scanner also measures the distance between annual rings and reliably identifies their orientation as well as the pith-side location.

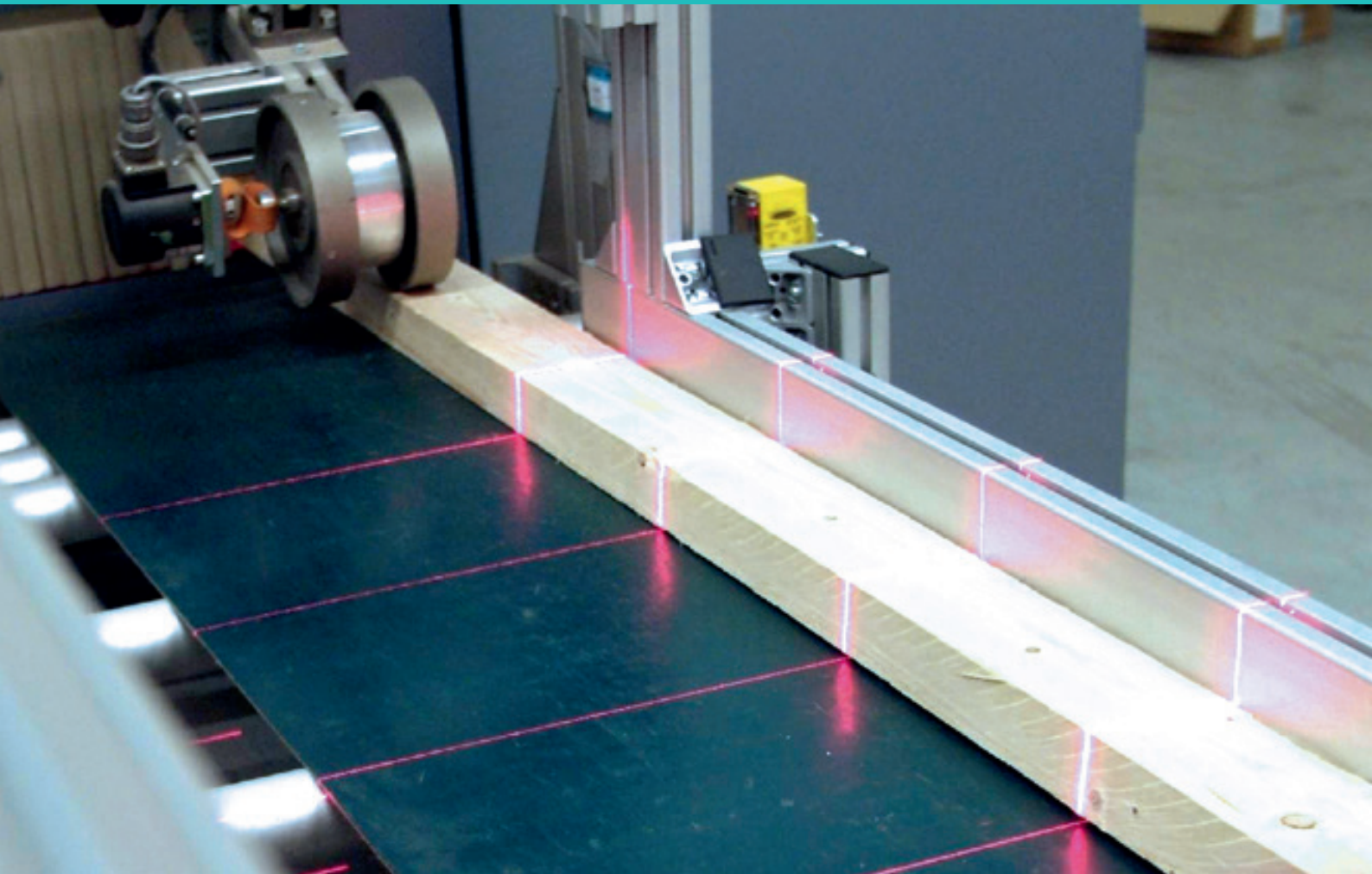
Optiside high-precision Cup Scanner for lumber is a powerful yet simple combination of LED illumination and Microtec proprietary Multi-Sensor cameras. The goal is to automatically detect the orientation of annual rings and the location of the pith side. The system sends the evaluated information to a lumber turner. The correct positioning of the annual rings, required for gluing, is fully automated. Optiside Cup Scanner can be further combined with a Goldeneye Multi-Sensor Quality Scanner to increase the quality optimization for grading, chopping and sorting.

«With Optiside Cup Scanner the correct positioning of the annual rings, required for planing and gluing, is fully automated.»

Dott. Ing. Federico Giudiceandrea
Microtec CEO

- × Recognizes cup of lumber in transverse transport
- × Identifies annual ring distance and pith-side location
- × Features an intuitive user interface





World leading wood scanning solutions

Microtec GmbH Srl
Via Julius-Durst Straße 98
39042 Bressanone/Brixen, Italy
T + 39 0472 273 611
info@microtec.eu
microtec.eu

Design: studiomut.com

