

Tech Tip # 10 August 2005

Written by: **Phil Rasey**, Stiles Education's Machining Center Specialist

Audience: Intermediate

Machine \ Process: Weeke

WoodWOP Components



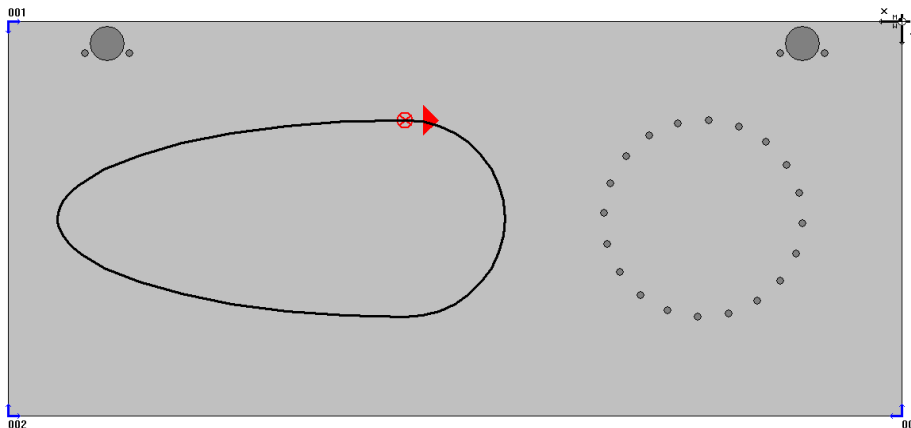
General information

Creating components in WoodWOP is simple; however the components may be modified into very powerful programming tools. WoodWOP programs that use multiple component operations may be confusing because of identical component icons. Make each individual machining operation stand out by **creating individual component icons**.

Creating Customized Icons

Creating individual or unique icons is one advantage to using components. Every component is created using the standard icon, but the programmer may create a specific icon design to highlight and separate the component macros used within a larger MPR program. Reviewing a complex MPR that utilizes multiple components can be confusing and it will take time looking for the name of each component. If these components were created with specialized icons, the programmer will immediately recognize the macro function.

WoodWOP program using multiple components

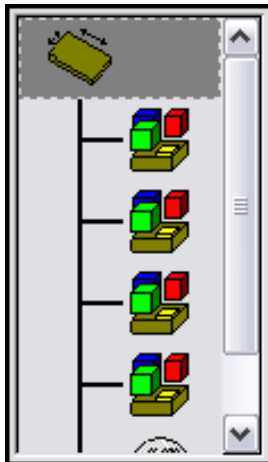


Learning On-Line

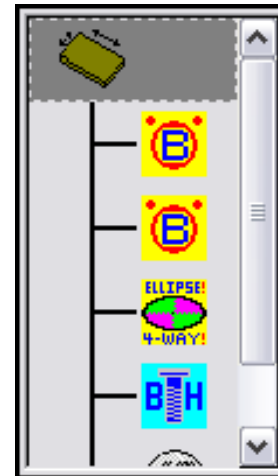
WoodWOP Components

Page 2

Standard Icons

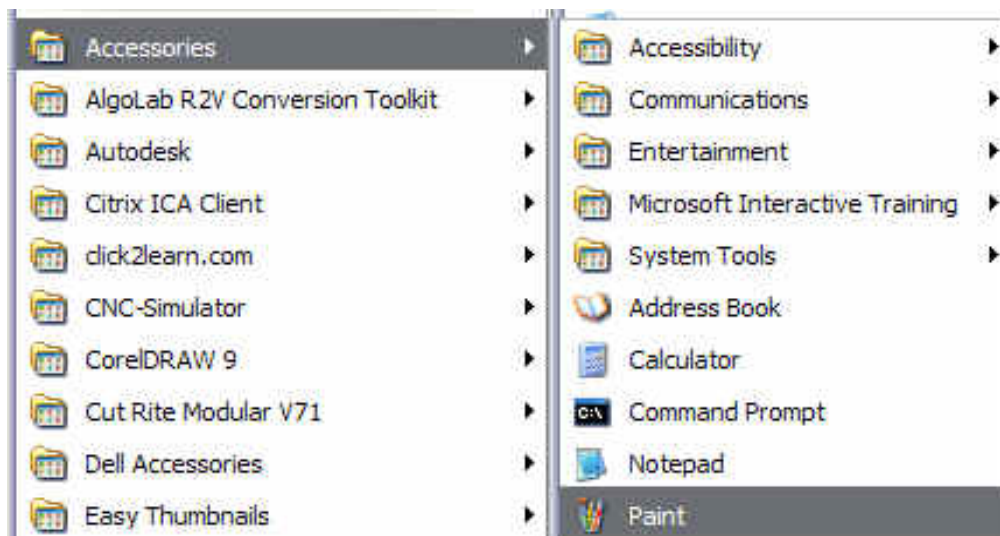


Customized Icons



Creating Customized Icons Step by Step

1. Open the Windows Paint program from the Accessories list within Windows.

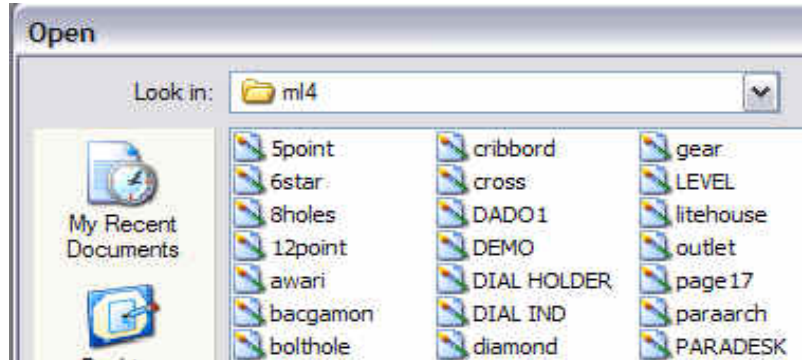


Learning On-Line

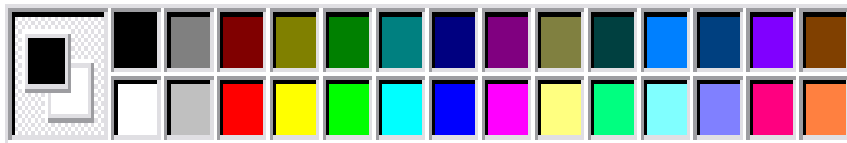
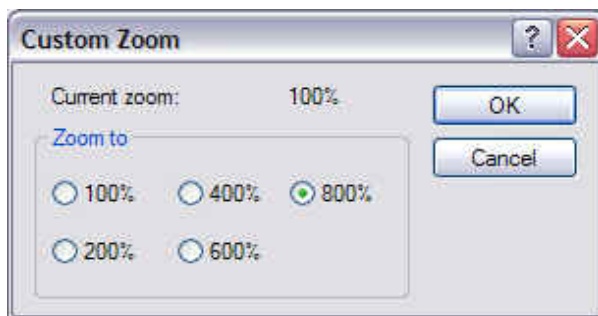
WoodWOP Components

- All component icons are created as bitmap images and are stored in: **C or D:\WW4\A1\ML**

Open any of the icon bitmaps in this folder.

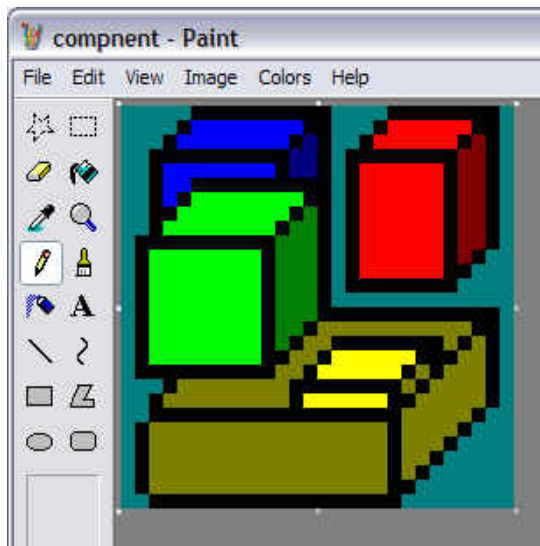


- Using the View / Zoom / Custom options, enlarge the image then change the icon using the shapes, drawing options and colors of the Paint Program.

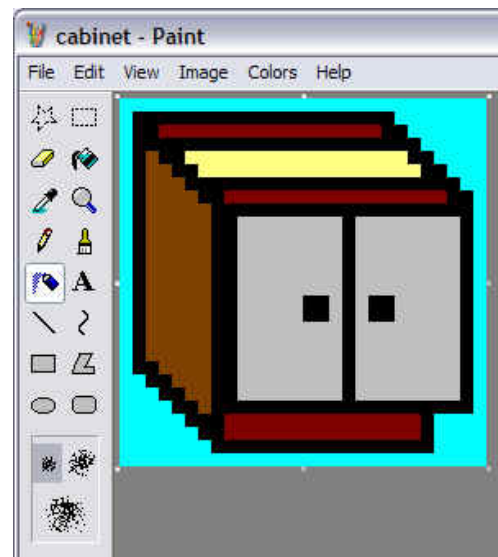


Learning On-Line

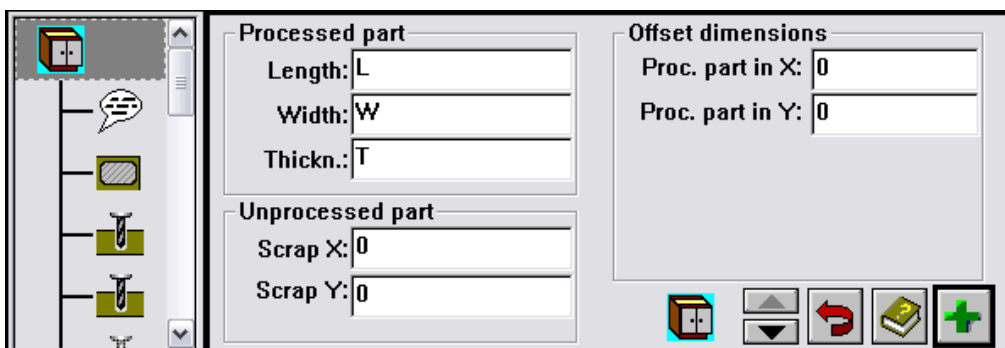
Standard Icon Component Design



Custom Icon Design



4. Save this new icon image into the ML4 folder using a unique name.
5. Open WoodWOP, then select:
File / Component / Open and select the desired component.
Select the Panel Size macro and select the “Additional Parameters” (+) icon.

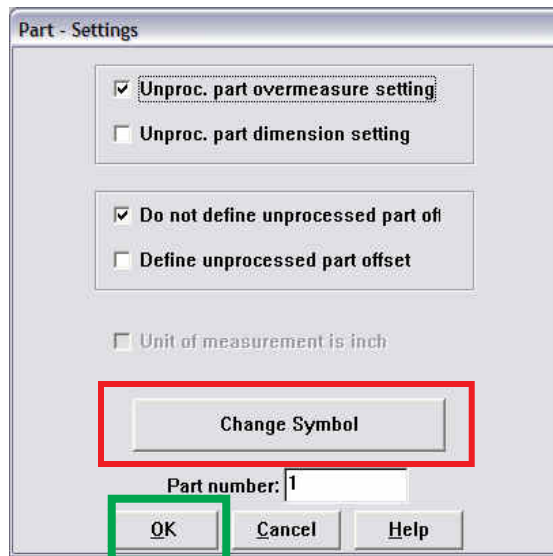


Learning On-Line

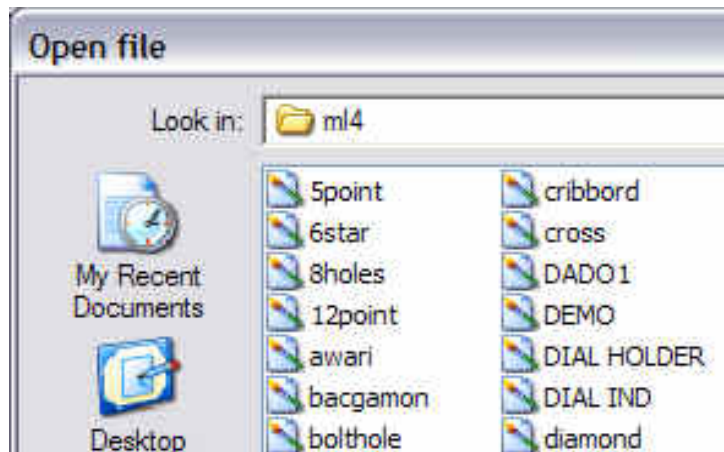
WoodWOP Components

Page 5

5 A. Select the **Change Symbol** icon



5 B. Select the desired bitmap icon image



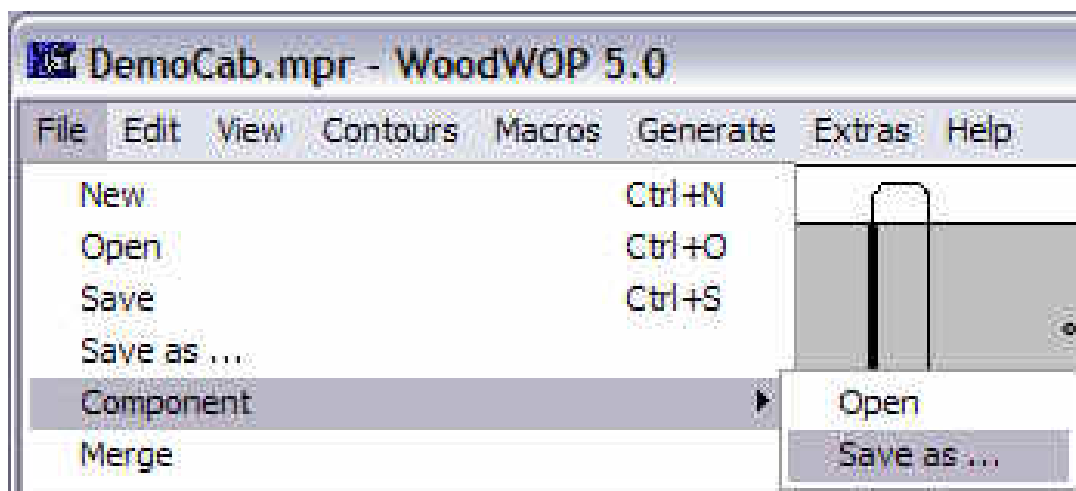
5C. Click on the **OK** button to save this selection.

Learning On-Line

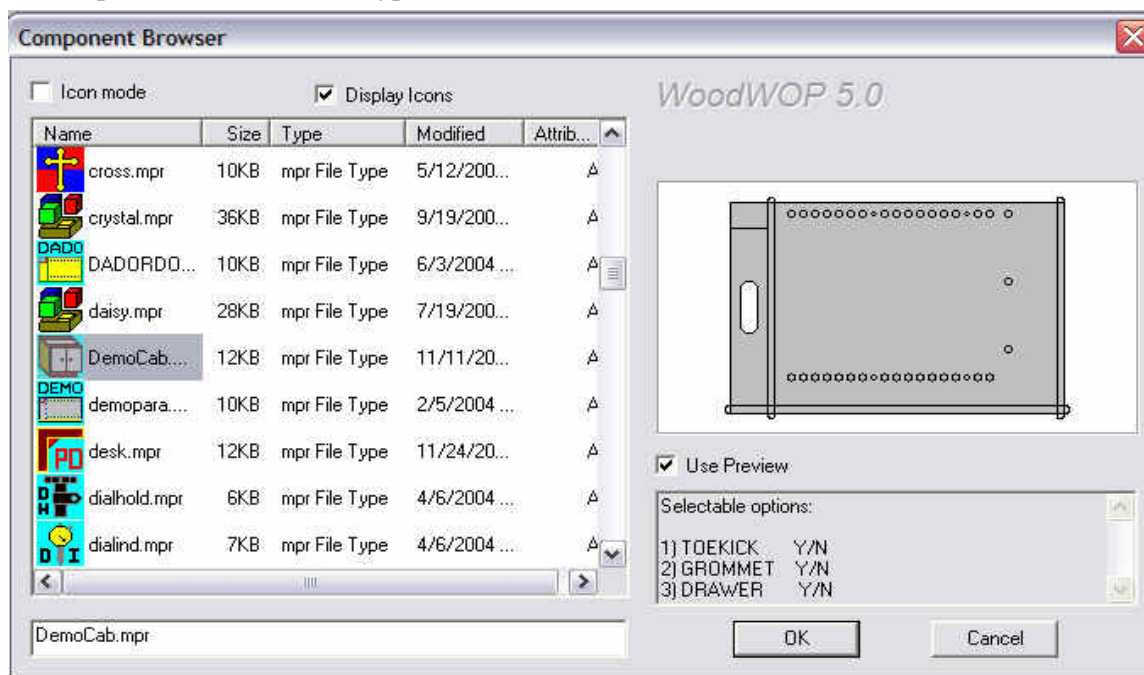
WoodWOP Components

Page 6

6. Save the component under the original name. The new icon will appear next to the component in the pull down menu.



7. When the component is selected from the **Component Browser**, the new icon will be displayed next to the component name, file size, type and date modified.



Learning On-Line

WoodWOP Components

Page 7

The NEXT STEP:

MC300 Advanced WoodWOP for CNC Machining Centers

MC502 Maintenance & Troubleshooting for Weeke CNC Machining Centers.

To register please contact Stiles Education; 616 698-7500

The entire course listing and schedule of classes is on the web site:
www.stilesmachinery.com/se

Stiles Education

3965 44th Street SE

Grand Rapids, MI 49512

p 616 698-7500

f 616 698-7524

www.stilesmachinery.com/SE

stiles
Virtual University